



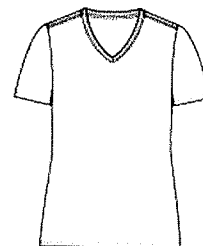
Port & Company® Ladies Fan Favorite V-Neck Tee. LPC450V

You'll be the biggest fan around of this 100% ring spun cotton tee.

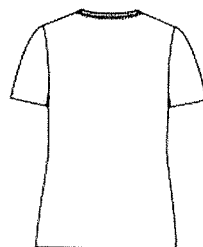
- 4.5-ounce, 100% ring spun cotton, 30 singles
- 90/10 cotton/poly (Athletic Heather)
- 50/50 cotton/poly (Dark Heather Grey)
- Ladies fashion fit
- Removable tag for comfort and relabeling

CARE INSTRUCTIONS

Machine wash cold inside out with like colors. Only non-chlorine bleach when needed. Tumble dry low. Do not iron.

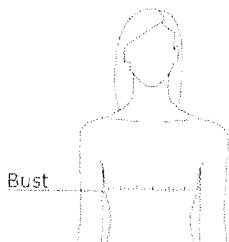


front



back

HOW TO MEASURE




















BUST

Measure under the arm and around the fullest part of the bust with arms down, keeping tape horizontal.

SIZE CHART

	XS	S	M	L	XL	XXL	3XL	4XL
Size	2	4/6	8/10	12/14	16/18	20/22	24/26	28/30
Bust	32-34	35-36	37-38	39-41	42-44	45-47	48-51	52-55

COLOR INFORMATION

 Athletic Heather PMS COOL GRAY 7C	 Athletic Maroon PMS 209C	 Bright Gold PMS 1235C	 Bright Red PMS 186C	 Charcoal PMS COOL GRAY 11C	 Dark Heather Grey PMS 7540C	 Deep Navy PMS 532C	 Forest Green PMS 7736C	 Jet Black PMS NTR BLACK C	 Light Blue PMS 278C	 New Pink PMS 190C
 Orange PMS 172C	 Sapphire PMS 2185C	 Team Cardinal PMS 201C	 Team Navy PMS 2766C	 Toam Purple PMS 669C	 True Royal PMS 7687C	White				



Essential Tee. PC61

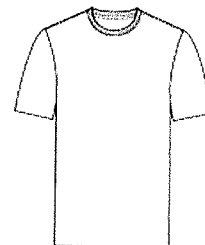


A year-round essential, our best-selling t-shirt has been voted "most popular" by groups, teams, clubs and schools across America.

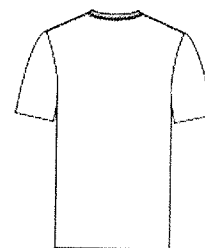
- 6.1-ounce, 100% soft spun cotton
- 98/2 cotton/poly (Ash)
- 90/10 cotton/poly (Athletic Heather)
- 50/50 cotton/poly (Dark Heather Grey)
- Removable tag for comfort and relabeling

CARE INSTRUCTIONS

Machine wash cold, inside out with like colors. Only non-chlorine bleach when needed. Tumble dry medium. Do not iron.



front



back

SIZE CHART

	S	M	L	XL	2XL	3XL	4XL	5XL	6XL
Chest	35-37	38-40	41-43	44-46	47-49	50-53	54-57	58-60	61-63

COLOR INFORMATION



Essential Tee. PC61

PRODUCT MEASUREMENTS

	S	M	L	XL	2XL	3XL	4XL	5XL	6XL
Chest Width	18	20	22	24	26	28	30	32	34
Sleeve Length from Center Back	16 3/4	17 3/4	18 3/4	19 3/4	20 3/4	21 3/4	22 3/4	23 3/4	24 3/4
Body Length at Back	28	29	30	31	32	33	34	35	36

CHEST WIDTH

Measured across the chest one inch below armhole when laid flat.

SLEEVE LENGTH FROM CENTER BACK

Measure from Center Back neck to shoulder point to sleeve hem.

BODY LENGTH AT BACK

Measured from high point shoulder to finished hem at back.